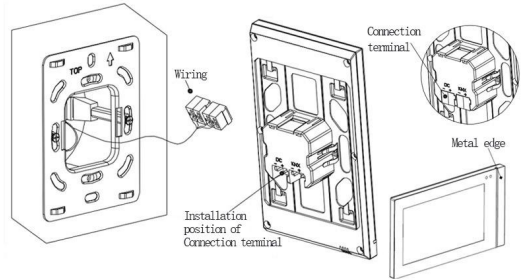
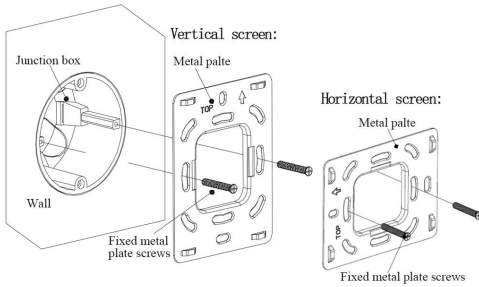
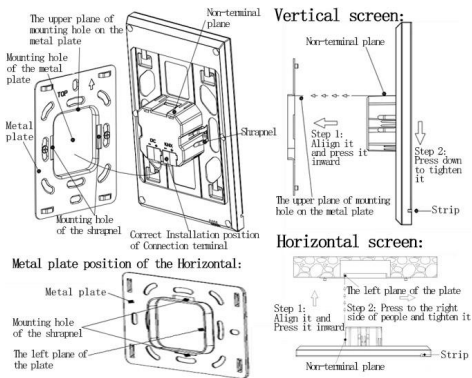


Installation instructions



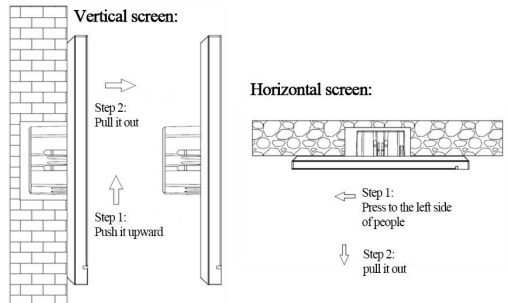
1. Install metal plate to the junction box on the wall with mounting screws. Installation specification:
 (1) It is suggested that Junction box should be parallel with the wall horizon;
 (2) When Vertical screen, the upper direction is defined where marks with arrow and "TOP" description on the metal plate; While Horizontal screen is treated as the left side;
 (3) Screwdriver should not drive too strong when installed, otherwise it will result in the deformation of the metal plate. The recommended strength is 0.6 ~ 0.8N.M (6 ~ 8Kgf.cm).

2. Remove the connection terminal on the device and connect it correctly according to the wiring instructions. After wiring, install the terminal to the corresponding position, then the wiring installation is finished.
Note: the metal edge is on the right side of the people when the panel is installed.



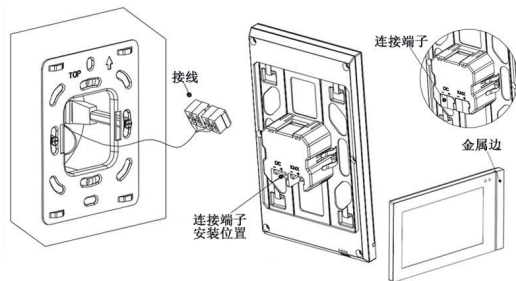
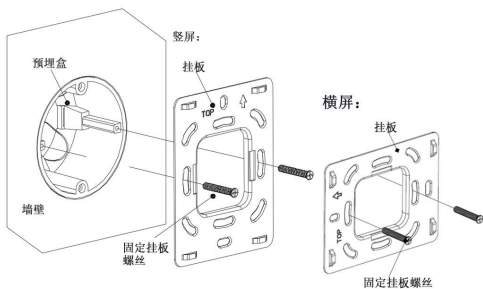
3. After connection of the device complete,
 (1) Action 1: Align the back of the device to the mounting hole position of the metal plate, requiring the device to be parallel to the wall or the metal plate;
 (2) Action 2: The non-terminal plane of the bulge on the back of the device is aligned to the upper(left) plane of the hole position of the metal plate, and attention should be paid to the shrapnel installation hole of the metal plate.
 (3) Action 3: After finishing action 1 and action 2, pull the device down (press the device to the right side of people and tighten it), then the installation is finished.

Disassembly instructions



4. After finishing the installation, if disassembly is required, please perform this step:
 Vertical screen: Push the device upward, then pull it out toward the horizontal direction when hear a buckle sound or when the device can no longer be moved, then the disassembly is finished.
 Horizontal screen: Push the device to the left side of people, then pull it out to the front direction of people when hear a buckle sound or when the device can no longer be moved, then the disassembly is finished.

安装说明



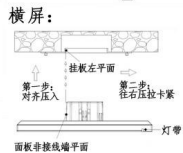
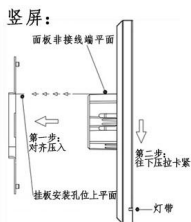
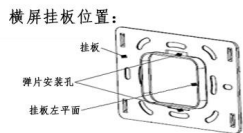
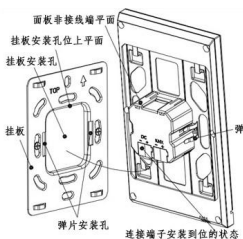
1. 将挂板通过安装螺丝安装到墙上预埋盒。

安装规范:

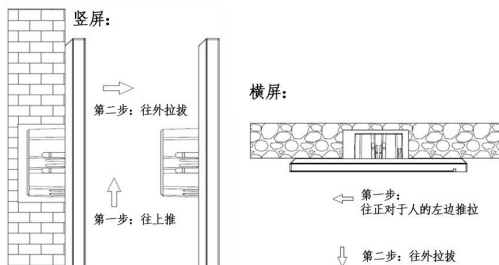
- (1) 预埋盒建议要与墙壁平面平齐;
- (2) 竖屏安装, 挂板标向上箭头和 TOP 的为上端; 横屏安装, 正对人的左边 (横屏);
- (3) 安装时螺丝刀力度不能过大, 导致挂板变形。建议的力度为 0.6~0.8N.M (6~8Kgf.cm);
- (4) 采用 86 接线盒安装时, 固定挂板螺丝需采用我司配套的 M4 专用螺丝。

2. 将面板上的连接端子取下, 按接线说明进行接线。完成接线后, 再把接线端子安装到相对应位置。即可完成接线安装。

注意: 横屏安装时, 金属边在正对于人的右边。



拆卸说明



3. 面板接线连接好后:

- (1) 动作 1: 将面板背面对准挂板安装孔位, 要求面板平行于墙面或者挂板;
- (2) 动作 2: 面板背面突起部分的非接线端平面对准紧贴挂板孔位的上平面(左平面), 同时要注意面板的弹片要对准挂板的弹片安装孔, 对准后压入。
- (3) 动作 3: 完成动作 1, 动作 2 后将面板往下 (往正对于人的右边) 压拉卡紧, 即可完成安装。

4. 安装完成后, 如需要拆卸, 请执行此步骤:

竖屏: 将面板往上推, 听到哒的声音后或者面板不能再移动时, 再往水平方向外拉拔, 即可完成拆卸。

横屏: 将面板往正对于人的左边推拉, 听到哒的声音后或者面板不能再移动时, 再往人的正面方向拉拔, 即可完成拆卸。